



# BEAR<sup>®</sup>

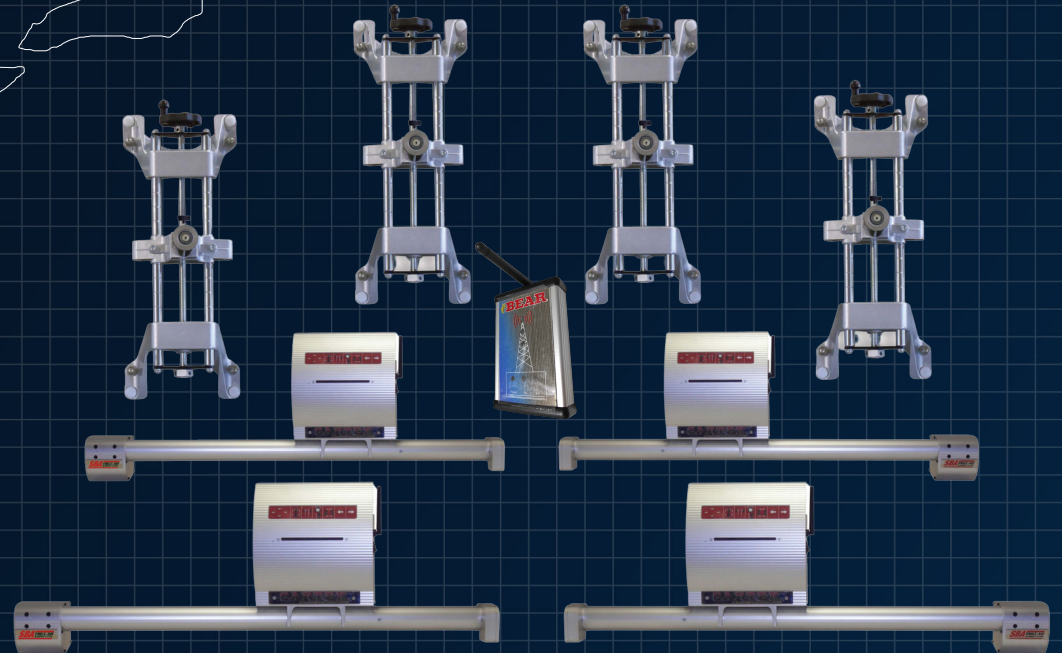
*Advanced Wheel Alignment Systems*

**MODEL  
60-8310L**



**SBA**  
**WHEEL ALIGNMENT**

# MODEL 60-8310L



- Sturdy all-aluminum cabinet
- Straight arm wheel units for cars and light trucks
- 8-Sensor 2.4Ghz Wireless operation
- PC with 32" 1920x1080 LED display
- Self-Centering Rim Clamps with 24" rim diameter clamping capacity.
- Software SBA 16.49 - suscription for 12 months



## Alignment accesories:

Stiring  
Wheel Hold

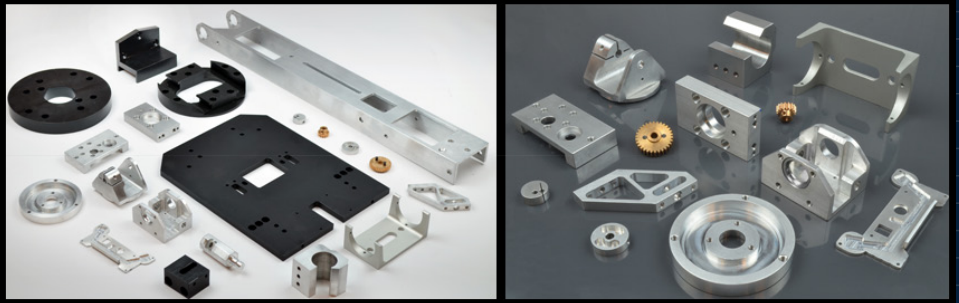
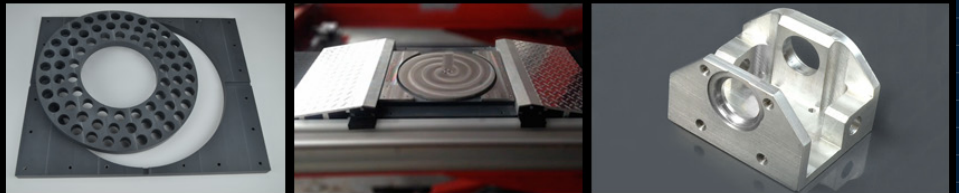


Brake Pedal  
Depressor



- 2 year Parts Warranty

**BEAR**  
ALIGNMENT  
MACHINES ARE  
MANUFACTURED  
100% IN THE USA



★ **2 YEAR** ★  
**WHEEL ALIGNMENT  
WARRANTY**

*Unique Industry-Wide 2 Year Parts warranty*  
*Exceptions: Computer (motherboard, RAM, hard drive, floppy drive, power supply) and Computer Peripherals (mouse, keyboard, printer, monitor, camera) which are covered under their respective manufacturer's warranty. Consumable parts such as Power Cables, Wheel Unit Cables and batteries, which are covered under warranty for 90 days.*

Distributed by:

THE CARTEK GROUP  
6950 EAST N AVENUE  
KALAMAZOO, MI USA 49048  
ph: 866-550-1134 / [customerservice@cartek.com](mailto:customerservice@cartek.com)  
[www.bear-cartek.com](http://www.bear-cartek.com)